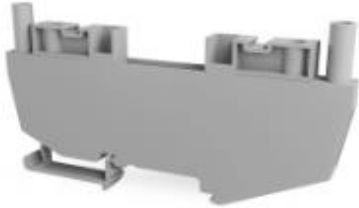


TDT-C 6

[Accessories](#) [Documents](#) [Certificates](#) [Technical detail](#)



Product code:	8004099808
Color Definition:	Gray
Voltage V (IEC 60947-7-1):	400
Current A (IEC 60947-7-1):	41
Impulse Voltage kV:	6
Cross-Section mm²:	6
Width mm:	8
Length mm:	107
Height mm MR35x7,5:	61,5
Height mm MR35x15:	69
Solid Conductor Cross-Section min mm²:	0.5
Solid Conductor Cross-Section max mm²:	10
Stranded Conductor Cross-Section:	0.5
Stranded Conductor Cross-Section max mm²:	10
AWG Cross-Section:	20-8 AWG
Stripping Length mm:	12
Packing Quantity:	20
Insulation Material:	PA
Tightening Torque N:	0,5
Clamping Screw:	M3,5
Screw Driver:	0,5x3,0
Center Screw:	M3