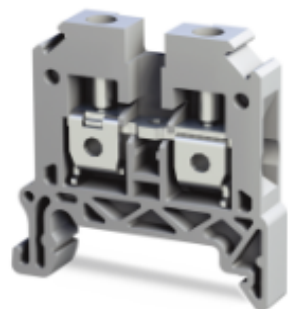


## TBL 10

[Accessories](#) [Docs](#) [Certificates](#) [Technical Detail](#)



<b>Product Code:</b>	8000099048
<b>Color Description:</b>	Gray
<b>Voltage V (IEC 60947-7-1):</b>	800
<b>Current A (IEC 60947-7-1):</b>	57
<b>Impulse Voltage kV:</b>	8
<b>Cross section mm<sup>2</sup>:</b>	10
<b>Width mm:</b>	10
<b>Length mm:</b>	45,3
<b>Height mm MR35x7,5:</b>	47,4
<b>Height mm MR35x15:</b>	54,9
<b>Single Conductor Cross-Sectional Spacing min mm<sup>2</sup>:</b>	0.5
<b>Single Conductor Cross-Sectional Spacing max mm<sup>2</sup>:</b>	16
<b>Multi-Conductor Cross-Sectional Spacing min mm<sup>2</sup>:</b>	0.5
<b>Multi-Conductor Cross-Sectional Spacing max mm<sup>2</sup>:</b>	16
<b>AWG Section Range:</b>	20-6 AWG
<b>Cable Stripping Length mm:</b>	12
<b>Box Quantity:</b>	50
<b>Insulation Material:</b>	PA
<b>Tightening Torque N:</b>	1,5
<b>Crimping Tip:</b>	M4
<b>Screwdriver:</b>	1x5