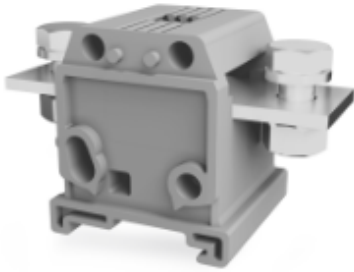


## TBB 150



[Accessories](#) [Documents](#) [Technical detail](#)

<b>Product code:</b>	8000099148
<b>Color Definition:</b>	Gray
<b>Voltage V (IEC 60947-7-1):</b>	1000
<b>Current A (IEC 60947-7-1):</b>	309
<b>Impulse Voltage kV:</b>	8
<b>Cross-Section mm<sup>2</sup>:</b>	150
<b>Width mm:</b>	43,5
<b>Length mm:</b>	202
<b>Height mm MR35x7,5:</b>	72
<b>Height mm MR35x15:</b>	79
<b>Packing Quantity:</b>	5
<b>Insulation Material:</b>	PA
<b>Hole Diameter/Busbar Size mm:</b>	13 \ /30x5
<b>Cable Lugs DIN 46234 min mm<sup>2</sup>:</b>	10
<b>Cable Lugs DIN 46234 max mm<sup>2</sup>:</b>	150
<b>Cable Lugs DIN 46235 min mm<sup>2</sup>:</b>	25
<b>Cable Lugs DIN 46235 max mm<sup>2</sup>:</b>	150
<b>AWG Cross-Section DIN 46234:</b>	8-300 Kcmil
<b>AWG Cross-Section DIN 46235:</b>	4-300 Kcmil
<b>Tightening Torque N:</b>	25-30
<b>Clamping Screw:</b>	M12